

Danforth
Museum of Art



**OFF THE
WALL**

ANNUAL JURIED EXHIBITION CATALOG

JUNE 3 - AUGUST 5, 2012

JUROR'S STATEMENT

As a curator of American painting, I often find myself moving between aesthetic appreciation and social interpretation—between beauty and what it has meant to past generations. Not infrequently, explanation takes precedence over contemplation. Reviewing the works submitted for *Off The Wall* offered a welcome opportunity to focus more purely on the visual. The submissions revealed a wealth of artists adeptly using the language of art in ways that are compelling, beautiful, and thought provoking.

I gravitated towards art reflecting a strong sense of design and composition, coupled with technical proficiency. Rich surfaces, textures, and patterns are a refrain apparent across all media. Organic forms suggestive of natural processes and biological activity appear frequently; strongly geometric formal qualities occur in just as many, often as tightly framed views of architecture and the urban world. More than a few works juxtapose nature with the fabricated world. Traditional landscapes and cityscapes appear, but do not predominate. Maps, or cartographic-like forms, appear explicitly in some, while others record the trace of a location, the ghosts and memories of a place and time.

Across the board, I found a strong sense of topography, the recording and cataloging of the natural and artificial features of our surroundings. These artists use their work to visually understand and map their environment, offering a way of knowing that is visual—a pictorial index of place and phenomena. As a group, they also provide clear evidence that this place, this region that has long nourished artists, continues to sustain a flourishing creative community.

I thank all of the artists who submitted work. I also extend my gratitude to the staff of the Danforth Museum, especially Katherine French, Director, and Jessica Roscio, Associate Curator and Museum Registrar, for making this gathering of artistic talent possible.

Cody Hartley
Director, Gifts of Art
Museum of Fine Arts, Boston

CODY HARTLEY

Cody Hartley joined the MFA in 2008 as Assistant Curator of Paintings in the Art of the Americas department, where he contributed to the installation of the new Americas wing, made a number of significant acquisitions, and was a contributing author to several MFA publications. Prior to joining the MFA, Hartley was Assistant Curator of American Art at the Sterling and Francine Clark Art Institute in Williamstown, MA.

Off the Wall showcases 103 works from 80 artists selected from over 1,400 works submitted for jury consideration.

ROBERT ALTER

Cambridge, MA

La Defense Series 2, 2011
Inkjet archival print
13" x 13" on 17" x 22" sheet
\$600

EDUCATION

Georgia State University, BVA, 1977
Massachusetts Institute of Technology, M.S. Vis., 1982

RECENT EXHIBITIONS

Off the Wall, Danforth Museum of Art, Framingham, MA, 2011



ERNEST ANDRADES

Boston, MA



Extinction, 2010
Oil on canvas
30" x 40"
\$7,000

RECENT EXHIBITIONS

Open Studios @ Fenway Studios, 2009

Fenway Studios, Then and Now, 2009

Mayor's Invitational Boston Open Studios, 2008

Group showing at St. Botolph Club of Boston, 2005

MARY ARMSTRONG

Newton, MA



(Top) *Poet's Clouds*, 2011
Oil and wax on panel
12" x 16"
\$1,500



(Bottom) *After Blakelock*, 2010
Oil and wax on panel
16" x 20"
\$1,800

EDUCATION

Boston University School of Visual Arts, BFA, 1972
Lesley College, M.ED, 1976

RECENT EXHIBITIONS

Any Given Moment, Victoria Munroe Gallery, Boston, MA, 2011

New Work, Victoria Munroe Gallery, Boston, MA, 2009

Memory of Desire: Mapping The Venetian Lagoon,
Victoria Munroe Gallery, Boston, MA, 2007

24 Hour News, Victoria Munroe Gallery, Boston, MA, 2006

PAUL BARON

Canton, MA

90 Degrees, 2011
Archival pigment print
19" x 12.7"
\$2,600

EDUCATION

Visual Studies Workshop/SUNY at Buffalo/Rochester, NY, MFA,
1972
Rochester Institute of Technology, BFA, 1969

RECENT EXHIBITIONS

Off the Wall, Danforth Museum of Art, Framingham, MA, 2010,
2011

ARCH, Manifest Gallery, Cincinnati, OH, 2011

Photowork '10, Barrett Art Center, Poughkeepsie, NY, 2010

Photo Biennial, Louisville, KY, 2009



BARBARA BAUM

Milton, MA

Ships, 2011

Mixed media, watercolor, prints, photographs

26.25" x 37.75"

Not for Sale

EDUCATION

Boston University, MFA, 1977

Boston University, BFA, 1970

RECENT EXHIBITIONS

Summer Show, Neilsen Gallery, Boston, MA, 2005

Paintings, Gallery AA/B, Boston, MA, 2004

Recent Paintings, Nesto Gallery, Milton, MA, 1997

Paintings, Lane Art Gallery, Gordon College, Wenham, MA, 1990



THADDEUS BEAL

Waban, MA



3rd Prize Winner of Off the Wall



(Top) *Carbon Hypostases 59*, 2011

Charcoal on paper

28" x 28"

Not For Sale

(Bottom) *Carbon Hypostases 67*, 2011

Charcoal on paper

20" x 47"

Not For Sale

EDUCATION

School of the Museum of Fine Arts, Boston, Diploma, 1989

RECENT EXHIBITIONS

Recent Acquisition, Museum of Fine Arts, Boston, MA, 1991

One Person Show, Robert Steele Gallery, New York, NY, 2005

Big Bang, DeCordova Museum and Sculpture Park, 2007

One Person Show, Barrington Center for the Arts,
Gordon College, Wenham, MA, 2009

PAMELA BEAROR-AMIRALIAN

North Andover, MA



2nd Prize Winner of Off the Wall

Humanities Expansion, 2011
Vinegar paint on canvas
48" x 48"
\$3,500

EDUCATION

Massachusetts College of Art and Design, BFA, 1975

RECENT EXHIBITIONS

Faculty Show, Essex Art Center, Lawrence, MA, 2010

Wintered Juried Show Part II, Newburyport Artist Association, Newburyport, MA, 2012

Surfaces, Stovefactory, Charlestown, MA, 2012

CHUCK BEISCH

Cambridge, MA

Hardings Beach Rake 2, 2011
Inkjet print
9 1/2" x 14" / 20 1/2" x 28 1/2" framed
\$350

EDUCATION

Syracuse University, BFA

RECENT EXHIBITIONS

Blue, Cambridge Art Association, 2010

Regional Show, Cambridge Art Association, 2011

Members Show, Concord Art Association, 2012



WILLIAM BETCHER

Needham, MA

November Frozen Lily, 2010
Inkjet print on Canson Baryta paper
15" x 15"
\$550

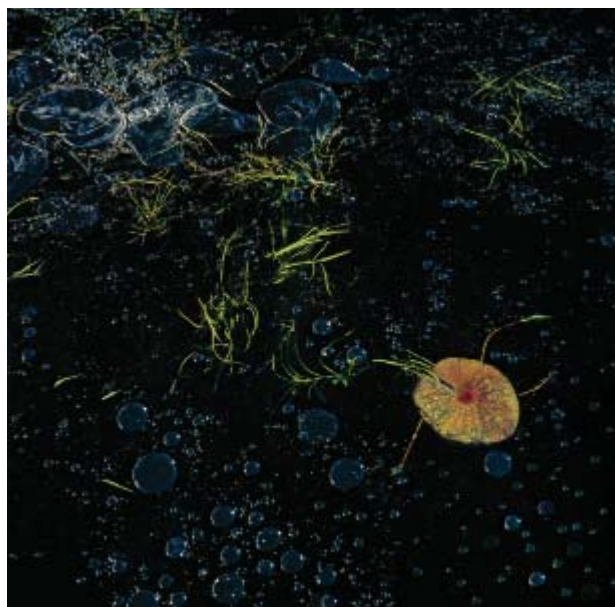
EDUCATION

Vermont College, MFA, 1997

RECENT EXHIBITIONS

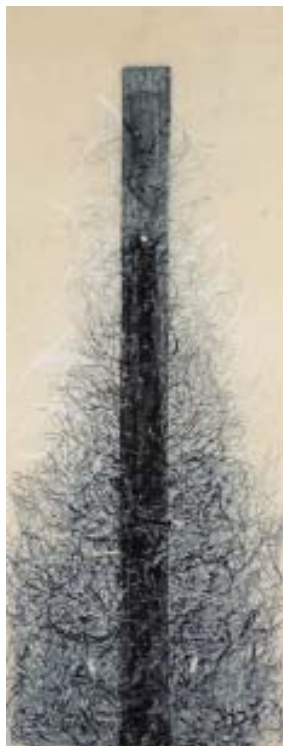
Stained Light, University of New England, Biddeford, ME, 2009

Lily Pond, The Heart of Biddeford Gallery, Biddeford, ME, 2008



SUZANNE BOOTH

Dover, MA



Bittersweet, 2012
Charcoal, ink
47.5" x 18.25"
\$1,200

EDUCATION

Pennsylvania State University, BA, Art and Art History 1976
School of the Museum of Fine Arts, Boston/Tufts University,
MFA, 2001

Honorable Mention

MAGGI BROWN

Cambridge, MA



Lost Borders #8, 2011
Oil on canvas
26" x 32"
\$3,500

EDUCATION

School of the Museum of Fine Arts, Boston,
Graduate Certificate, 1983
School of the Museum of Fine Arts, Boston, Diploma, 1982
Tufts University, BFA, 1982

RECENT EXHIBITIONS

Community of Artists, Danforth Museum of Art, 2011

North East Prize Show, Cambridge Arts Council, 2011

Depth and Construction, Barbara Krakow Gallery, 2010

Solo Exhibitions, Barbara Krakow Gallery, 2000

ANDREW BUCK

Farmington, CT

(Top) *Rockface 27*, 2008
Pigment inkjet print
44" x 44"
\$2,500

(Bottom) *Rockface 29*, 2008
Pigment inkjet print
44" x 44"
\$2,500

EDUCATION

Light Work, Syracuse, NY, 1973

RECENT EXHIBITIONS

Gallery on the Green, Canton, CT, 2012

Real Art Ways, Hartford, CT, 2011

Fresh: Ohio, Bowling Green State University Art Gallery,
Bowling Green, OH, 2011

New England Photography Biennial, Danforth Museum of Art,
Framingham, MA, 2011



PATRICIA BURSON

Dorchester, MA

Naïobe, 2009

Oil on linen

40" x 60"

\$4,100

EDUCATION

Carnegie Mellon University, BFA, 1971

RECENT EXHIBITIONS

Life & Still Life, Art3 Gallery, Manchester, NH, 2011

Members Prize Show, Cambridge Art Association,
Cambridge, MA, 2009

Community of Artists Juried Exhibition, Danforth Museum of
Art, Framingham, MA, 2009



SANDRA CARDILLO

Framingham, MA



Doorway Venice #1, 2012

Intaglio

9.5" x 7.5"

\$300

EDUCATION

Brandeis University, Post-Baccalaureate Program, 2001

Framingham State College, BA, 2000

RECENT EXHIBITIONS

Northeast Prize Show, Cambridge Art Association, Cambridge,
MA, 2011

2nd National Juried Monotype & Monoprint Exhibition,
Fitchburg Art Museum, Fitchburg, MA, 2010

Biennial 2009, New Hampshire Institute of Art, Manchester, NH,
2009

Endless Possibilities: The Unique Print, LynnArts Inc., Lynn,
MA, 2009

PELLE CASS

Brookline, MA



Quincy Market, Spring, 2012

Inkjet print

17" x 25"

\$1,200

RECENT EXHIBITIONS

Pelle Cass: Selected People, Houston Center for Photography, Houston, TX, 2011

Pelle Cass: Selected People, Gallery Kayafas, Boston, MA, 2010

Pelle Cass: Pins, Griffin Museum of Photography, Winchester, MA, 2008

Northeast Exposure: Vaughn Sills and Pelle Cass, Photographic Resource Center at Boston University, Boston, MA, curated by Leslie K. Brown, 2003

LESLEY COHEN

Newton, MA

Structure #10, 2011

Charcoal and chalk pastel

22" x 15"

\$1,800

EDUCATION

Boston University, MFA, 1972

State University College of New York at Buffalo, BS, 1967

RECENT EXHIBITIONS

Mapping My Thoughts, Holzwasser Gallery, Newton, MA, 2012

Off the Wall, Danforth Museum of Art, Framingham, MA, 2011

Everything Must Go, Bromfield Gallery, Boston, MA, 2011

Black and White Excellence, Newton Cultural Center, Newton, MA, 2010



JODI COLELLA

Somerville, MA

Receptor, 2011
Mixed fiber, wire, paint
52" x 36" x 24"
\$3,000

EDUCATION

Boston University, BA, 1981
The Artists Professional Toolbox, 2010

RECENT EXHIBITIONS

Phyla, NK Gallery, SOWA Boston, MA, 2012

Micromorphic, Woodstock Byrdcliffe Guild, Woodstock, NY, 2012

Gooey, Gobby, Gummy, Gallery 263, Cambridge, MA, 2012

Outside/Inside the Box, Fiber Philadelphia 2012, Crane Arts, Philadelphia, PA, 2012



Honorable Mention

MERILL COMEAU

Concord, MA



Ladies of Weir Farm, 2011
Mixed media
7' x 5'
\$2,500

EDUCATION

Boston University, Continuing Education, Art History
Boston Architectural College, Architecture & Interior Design
University of Massachusetts, Amherst, BA

RECENT EXHIBITIONS

Southern New Hampshire University Academic Center,
Manchester, NH, 2012

Tree Pieces, Arnold Arboretum, Jamaica Plain, MA, 2011

Merill Comeau, The Center for Arts in Natick, Natick, MA,
2011

Fragments of Eden, ArtSpace Gallery, Maynard, MA, 2010

DAVID COVERT

Arlington, MA



(Top) *NWR 1*, 2009
Acrylic on canvas
30" x 40"
\$1,500



(Bottom) *NWR 3*, 2012
Acrylic on canvas
30" x 40"
\$1,500

RECENT EXHIBITIONS

Landscape, Concord Art Association, Concord, MA, 2012

New England Scapes, Gallery Seven, Maynard, MA, 2011

CT+6, West Hartford Art League, Hartford, CT, 2011

Sources - Origins, South Shore Art Center, Cohasset, MA, 2011

LYNDA CUTRELL

Marblehead, MA

Latitude 43, 2012
Oil on canvas
30" x 40"
\$1,800

EDUCATION

School of the Museum of Fine Arts, Boston, Post Bac., 2008
School of the Museum of Fine Arts, Boston, Diploma, 2007

RECENT EXHIBITIONS

Galatea Fine Arts, Boston, MA, 2012

Off the Wall, Danforth Museum of Art, Framingham, MA, 2011

Grossman Gallery, School of the Museum of Fine Arts, Boston
MA, 2011

Vineyards and Vines, Wine Gallery, Brookline, MA, 2010



ADRIENNE DER MARDEROSIAN

Belmont, MA

(Left) *Passage*, 2010

Mixed media

8" x 4"

\$900

(Right) *Portrait of a Moment*, 2010

Mixed media

8" x 4"

\$900

EDUCATION

Tufts University, BS, 1980

RECENT EXHIBITIONS

2nd Annual Art Competition, Hammond Museum, New Salem, NY, 2012

Off the Wall, Danforth Museum of Art, Framingham, MA, 2011

New England Collective II, Galatea Gallery, Boston, MA, 2011

The Armenian Genocide-95 Years Later, In Remembrance, University of Rhode Island, Providence, RI, 2010



SHARON DEVEREUX

Woburn, MA



(Top) *Book Series 1*, 2012

Archival pigment print

42" x 20"

\$900

(Bottom) *Book Series 2*, 2012

Archival pigment print

42" x 20"

\$900



EDUCATION

Chamberlayne Junior College, AAS, Interior Design, 1986

RECENT EXHIBITIONS

Street Stage, Griffin Museum of Photography, Winchester, MA, 2011

Off the Wall, Danforth Museum of Art, Framingham, MA, 2011

Industrial Strength, Fountain Street Fine Art, Framingham, MA, 2011

Unscripted, Fountain Street Fine Art, Framingham, MA, 2011

LIZ DI GIORGIO

Long Island City, NY



(Top) *Nineteenth Rondel (#87)*, 2012
Oil on linen
31" x 31"
Not For Sale

(Bottom) *Witness (#93)*, 2010
Oil on linen
31" X 31"
Not For Sale

EDUCATION

Hunter College of the City University of New York, MFA, 1990
The Cooper Union, BFA, 1981

RECENT EXHIBITIONS

The Beauty of a Minor Matter, Skalitzer 140,
Berlin, Germany, 2011

Thirteen Paintings, Jason McCoy Inc, 2008

Options Within Realism, Jason McCoy Inc, 2007

Free Play, The Islip Art Museum, 2007

DENISE DRISCOLL

Holliston, MA

Brane 1, 2012
Mixed media on paper
96" x 42"
\$1,800

EDUCATION

The Art Institute of Boston at Lesley University, MFA, 2007

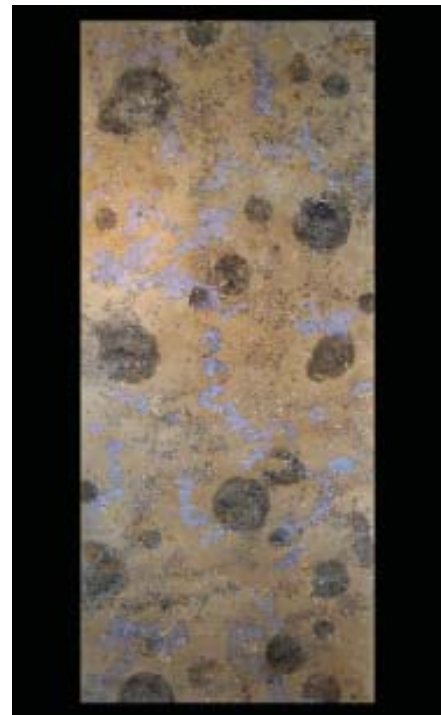
RECENT EXHIBITIONS

Co-Laboratory, Marran Gallery, Lesley University, Cambridge,
MA, 2011

Memory Catcher, Elsewhere Collaborative, Greensboro, NC,
2011

Multiple Totalities, Student Union Art Gallery, University of
Massachusetts, Amherst, MA, 2010

Material Meditation, New Art Center, Newton, MA, 2008



HELGA BUTZER FELLEISEN

Brookline, MA

Centerpiece (Chrysanthemum), 2011

36" x 66"

Hand cut vellum

\$1,700

EDUCATION

School of the Museum of Fine Arts, Boston, Fifth Year

Certificate, 2007

School of the Museum of Fine Arts, Boston, Diploma, 2006

RECENT EXHIBITIONS

Growth, 14th Annual Fidelity Investments Juried Exhibition,
The Providence Art Club, Providence, RI, 2012

Off the Wall, Danforth Museum of Art, Framingham, MA, 2010

Off the Wall, Danforth Museum of Art, Framingham, MA, 2009

Add and Subtract, Gallery Kayafas, Boston, MA, 2009



HOWARD FINEMAN

Newton, MA

(Left) *Reichstag Dome II, Berlin*, 2011

Pigment inkjet on archival paper

20" x 24"

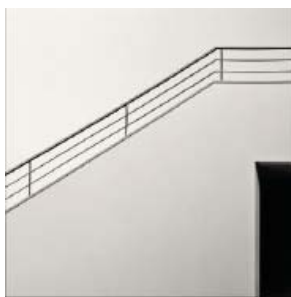
\$325

(Right) *Architectural Element, Kulturforum, Berlin*, 2011

Pigment inkjet on archival paper

16" x 20"

\$270



Honorable Mention

EDUCATION

Stanford University, Executive Program, 1988

Northeastern University, MBA, 1975

Massachusetts Institute of Technology, BSME, 1962

RECENT EXHIBITIONS

Juried Fine Art & Craft Show, Newton Open Studios,
Newton, MA, 2011

Juried Monochrome & Minimalism Show, Mayor Warren's
Office, Newton, MA, 2012

Juried Fine Art & Craft Show, Newton Open Studios,
Newton, MA, 2009

City-Wide Spring Open Studios, Newton Open Studios,
Newton, MA, 2011

ANGELA FIORI

Chestnut Hill, MA



Fenway Park, 2011

Oil on canvas

24" x 24"

\$850

EDUCATION

Santa Francisca Romana, Bogota, Colombia, 1977

Accademia di Belle Arti, Carrara, Italy, 1981

School of the Museum of Fine Arts, Boston, 1984

RECENT EXHIBITIONS

The Nest, Dedham, MA, 2012

The Bonnar Show, Belmont, MA, 2012

Open Studios, Spring Location JCC, Newton, MA, 2011

Allston Open Studios, Allston, MA, 2011

ELLEN FISHER

Newton, MA

Marlboro, 2011

Photography based print with colored pencil

15" x 20"

\$545

EDUCATION

School of the Museum of Fine Arts, Boston, MFA, 1985

Queens College, City University of New York, BFA, 1979

RECENT EXHIBITIONS

Electron Salon, Los Angeles Center for Digital Arts,
Los Angeles, CA, 2011

Unscripted, Fountain Street Fine Art, Framingham, MA, 2011

Collective, Galatea Gallery, Boston, MA, 2010

New Directions '09, Barrett Art Center, Poughkeepsie, NY, 2009



ALAN FORTESCUE

Conway, MA

State Street Fruit, 2012

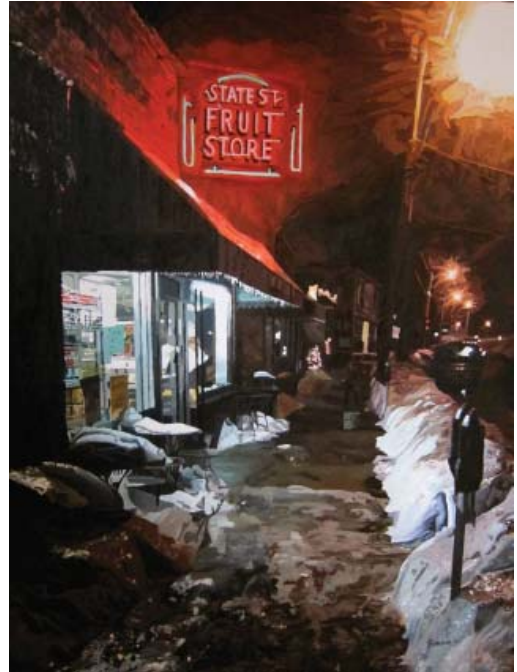
Oil on Board

30" x 40"

Not For Sale

RECENT EXHIBITIONS

Springfield Museum of Art, Springfield, OH, 2012



Honorable Mention

NANCY FULTON

Somerville, MA



(Top) *Hibernal no.05*, 2011

Photograph

24" x 31"

\$500

(Bottom) *Vernal no.05*, 2011

Photograph

24" x 31"

\$500

EDUCATION

Boston Architectural Center, B.Arch., 1987

RECENT EXHIBITIONS

A Tapestry of Seasons, The Gallery at Norumbega Point, Weston, MA, 2012

Light, The Muse and Subject of Photography, New Orleans Photo Alliance, New Orleans, LA, 2012

Featured Artist, NEO Gallery, Photographic Resource Center, Boston, MA, 2012

The 67th Members Prize Show, Kathryn Schultz Gallery, Cambridge Art Association, Cambridge, MA, 2011

FRANCIS GARDINO

Brighton, MA



Revere Beach Sunset, 2012

Digital photo on canvas

120" x 30"

\$3,200

EDUCATION

Massachusetts College of Art and Design, BFA, 1988

RECENT EXHIBITIONS

Four Seasons, NewTV, Newton, MA, 2011

Community of Artists, Danforth Museum of Art,
Framingham, MA, 2011

Sporting Traditions, Brighton Allston Heritage Museum,
Brighton, MA, 2011

Down by the River, Marblehead Art Association,
Marblehead, MA, 2010

ERIK GEHRING

Roslindale, MA

(Left) *Japanese Cherry Birch*, 2009

Archival inkjet print

24" x 19"

\$575

(Right) *London Plane Tree II*, 2008

Archival inkjet print

30" x 24"

\$800

RECENT EXHIBITIONS

Winter Juried Show, Duxbury Art Association, Duxbury, MA, 2012

Community of Artists, Danforth Museum of Art,
Framingham, MA, 2011

Summer Party Silent Auction, Museum of Fine Arts, Boston,
Boston, MA, 2011

22nd Annual Hyde Park Arts Association Exhibit,
Scollay Square Gallery, Boston City Hall, Boston, MA, 2011



BECKY GIBBS

Wayland, MA

Mindbug 4.0, 2010

Ink, watercolor, powdered pigments

54" x 54"

\$3,200

EDUCATION

Bowling Green State University, BFA, 1983

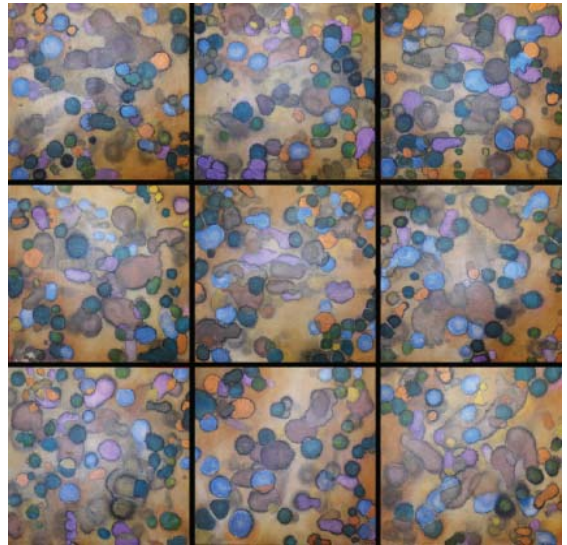
RECENT EXHIBITIONS

Members Juried I, Concord Art Association, Concord, MA, 2012

11th Frances N. Roddy Open Competition, Concord Art Association, Concord, MA, 2010

Imagine/Emotion, Galatea Fine Art, Boston, MA, 2010

65th Annual Member's Prize Show, Cambridge Art Association, Cambridge, MA, 2009



e.c. gower

West Roxbury, MA



Public Places, Private Spaces. Night Steps Down, 2012

Archival inkjet print

39" x 28"

\$800

EDUCATION

MIT, PhD

Massachusetts College of Art and Design, CE

The School of the Museum of Fine Arts, Boston, CE

Swarthmore College, BA

RECENT EXHIBITIONS

Violence Transformed, Roxbury Community College and the Massachusetts State House, Boston, MA, 2012

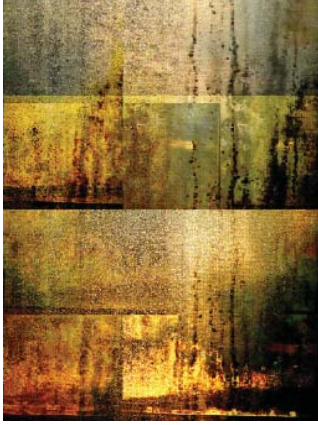
Members Juried II, Concord Art Association, Concord, MA, 2011

Annual Student Exhibition, School of the Museum of Fine Arts, Boston, 2009

The Art Complex Museum/Duxbury Art Association, Duxbury, MA, 2009

JOSHUA GREENBERG

Somerville, MA



(Left) *Abstract Landscape: No. 17*, 2012
Photo-based digital print
16" x 20"
\$850



(Right) *Abstract Landscape: No. 20*, 2012
Photo-based digital print
16" x 20"
\$850

RECENT EXHIBITIONS

The 2nd Viridian Artists International Juried Photography Exhibition, New York, NY, 2012

Scratching the Surface, Cambridge Art Association, Kathryn Schultz Gallery, Cambridge, MA, 2012

The 67th Annual Prize Show, Cambridge Art Association, Kathryn Schultz Gallery, Cambridge, MA, 2011

The 66th Annual Prize Show, Cambridge Art Association, Kathryn Schultz Gallery, Cambridge, MA, 2010

KATHERINE GULLA

West Roxbury, MA

(Top) *Islands 3*, 2010
Acrylic on canvas on panel
16" x 20"
\$1,500
Courtesy of the Artist and Gallery Kayafas

(Bottom) *Islands 4*, 2010
Acrylic on canvas on panel
16" x 20"
\$1,500

EDUCATION

Cranbrook Academy of Art, MFA Candidate, Painting, 1975
Lehman College, CUNY, BFA, Painting, Cum Laude, 1974

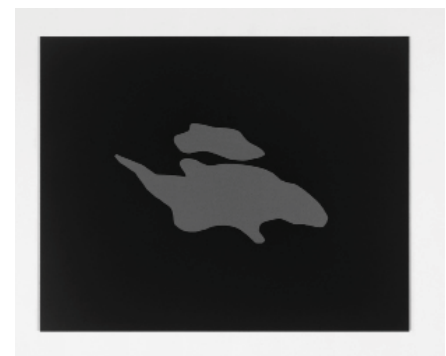
RECENT EXHIBITIONS

Off the Wall, Danforth Museum of Art, Framingham, MA, 2011

Off the Wall, Danforth Museum of Art, Framingham, MA, 2010

Cast Shadows, Danforth Museum of Art, Framingham, MA 2008

Night and Day, Gallery Kayafas, Boston, MA, 2008



PETER HAMMAR

Miami Beach, FL

Looking Thru My Diamond Dust Kaleidoscope, 2011
Acrylic paint and acrylic diamond dust spray paint
56" x 56" x 1.5"
\$10,000

EDUCATION

Florida International University, MFA Studio Art, 2012
Beckman's School of Design, BFA, 1993
Stockholm Art School, Associates Degree Fine Arts, 1990

RECENT EXHIBITIONS

Discrepant Modernism, The Patricia & Philip Frost Art Museum, Miami, FL, 2012

51st International Exhibition, San Diego Art Institute, San Diego, CA, 2011

The 112th Annual Exhibiting Members Show, The National Arts Club, New York, NY, 2011

Art Basel Miami, David Castillo Gallery, Miami, FL, 2010



DAVID HAWKINS

Auburndale, MA



Lines, Curves and Lights: White, Red, and Blue, 2012
Photo, archival inkjet print
44" x 30"
\$300

RECENT EXHIBITIONS

Off the Wall, Danforth Museum of Art, Framingham, MA, 2011

New Visions, Arsenal Center for the Arts, Watertown, MA, 2011

Industrial Strength, Fountain Street Fine Art, Framingham, MA, 2011

2D Small Works Salon, Maud Morgan Arts - Chandler Gallery, Cambridge, MA, 2012

GREG HEINS

Boston, MA



Collins House Bush, 2010
Pigment inkjet photograph
16" x 22"
\$750

RECENT EXHIBITIONS

New England Photography Biennial, Danforth Museum of Art, Framingham, MA, 2010

Off the Wall, Danforth Museum of Art, Framingham, MA, 2011

MARK HOPKINS

Lincoln, MA



Downstream from the Rapids #2, 2009
Photograph archival pigment print
13" x 23"
\$350

EDUCATION

Brown University, BA, 1954

RECENT EXHIBITIONS

Dartmouth College, Hanover, NH, 2011

National Photo Competition, Copley Society of Art, Boston, MA, 2011

Concord Art Association, Concord, MA, 2009

Massachusetts State House, Boston, MA, 2006

ALISON HORVITZ

Somerset, MA

Border City No.3, 2012

Oil on canvas

20" x 20"

\$800

EDUCATION

Boston University, BFA, 1977

RECENT EXHIBITIONS

2nd Annual Juried Exhibition, Galatea Fine Art,
Boston, MA, 2011

8th International Juried Show, Rome Art Coterie,
Rome, Georgia, 2010

13th International Juried Show, Woman-Made Gallery,
Chicago, IL, 2010

National Juried Show, First Street Gallery, New York, NY, 2008



SUS ISERBYT

Littleton, MA



(Left) *Abandoned*, 2012

Acrylics

30" x 24"

\$1,000

(Right) *Urban Tree*, 2011

Acrylics

12" x 12"

\$450



RECENT EXHIBITIONS

Solitude, Bedford Public Library, Bedford, MA, 2012

Winter Lights, Loading Dock Gallery, Lowell, MA, 2011

KAREN S. JACOBS

Framingham, MA



Ephemeral Skies XXX, 2011

Oil on Canvas

18" X 36"

\$1,550

EDUCATION

School of the Museum of Fine Arts, Boston, Diploma, 1998

RECENT EXHIBITIONS

The Fixed and The Fluid, Alpers Fine Art, Andover, MA, 2011

Aspects of the Ephemeral, Dalton & Finegold,
Andover, MA, 2011

Unscripted, Fountain Street Fine Art, Framingham, MA, 2011

Off The Wall, Danforth Museum of Art, Framingham, MA, 2010

DOUG JOHNSON

Marlborough, MA

DangerMoon, 2012

Photograph

20" x 24"

\$320

RECENT EXHIBITIONS

Photo Slam, Currier Museum of Art, Manchester, MA, 2012

Liminal: The Space Between, Emerson Umbrella Center for the
Arts, Concord, MA, 2012

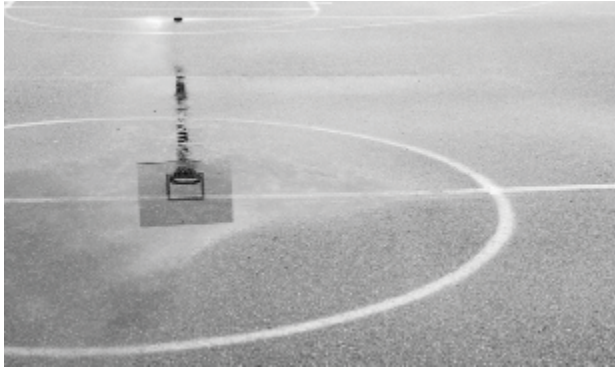
*Surfaces -- Interpretations of Tactile Adventures and
Subliminal Boundaries*, Artists' Group of Charlestown,
Stove Factory Gallery, Charlestown, MA, 2012

Miniature, Post Road Art Center, Marlborough, MA, 2011



DAVID B. KELLEY

Somersworth, NH



(Left) *Untitled (Basketball Court)*,
2011
Photograph
13" x 8"
\$1,100



(Right) *Untitled (Tree in Late Fall)*,
2011
Photograph
13" x 17"
\$1,100

ELLIE KERNS

Sudbury, MA



(Top) *Tripp Street Men's Room*, 2010
Oil on linen
44" x 34"
Not For Sale

(Bottom) *Tripp Street Freight Elevator*, 2011
Oil on linen
34" x 44"
\$5,000

RECENT EXHIBITIONS

National Juried Competition, NKG Gallery, Boston, MA, 2012

Industrial Strength, Fountain Street Gallery,
Framingham, MA, 2011

Summer Group Show, Powers Gallery, Acton, MA, 2011

Group Show, Soprafina Gallery, Boston, MA, 2009



DAVID R. LEVITT

Cambridge, MA



(Top) *Branching Water*, 2010
Archival digital print
11" x 14"
\$190



(Bottom) *Blue Sky Interrupted*, 2008
Archival digital print
11" x 14"
\$190

RECENT EXHIBITIONS

Shadows and Reflections, O'Neill Library, Cambridge, MA, 2012

Open Studios, North Cambridge Artists, Cambridge, MA, 2010

Open Studios, North Cambridge Artists, Cambridge, MA, 2009

Now You See It ..., Out of the Blue Gallery,
Cambridge, MA, 2007

SABERAH MALIK

Warwick, RI

(Top) *Boundary Unbound*, 2012
Textiles, ink
8" x 24" x 24"
\$4,000

(Bottom) *Broken Boundary*, 2012
Textiles, ink
6" x 36" x 18"
Not For Sale

EDUCATION

Pratt Institute, MID, 1972

University of the Panjab, Lahore, Pakistan, MFA, 1968

University of the Panjab, Lahore, Pakistan, BFA, 1967

RECENT EXHIBITIONS

TSGNY - Crossing Lines: The Many Faces of Fiber,
World Financial Center Courtyard Gallery, NY, 2012

Newport Open, Newport Museum of Art, Newport, RI, 2012

TSGNY - Crossing Lines: The Many Faces of Fiber,
World Financial Center Courtyard Gallery, NY, 2011



Honorable Mention



ILANA MANOLSON

Concord, MA

Islandscapes, 2012

Roots, plaster, maps, oil paint

38" x 38"

\$4,000

EDUCATION

Dawson College, Montreal, Art, 1986

Rhode Island School of Design, BFA, 1982

Goddard College, BA Art, Botany, 1978

RECENT EXHIBITIONS

Off the Wall, Danforth Museum of Art, Framingham, MA, 2010

Stasis/Flux, Clark Gallery, Lincoln, MA, 2009

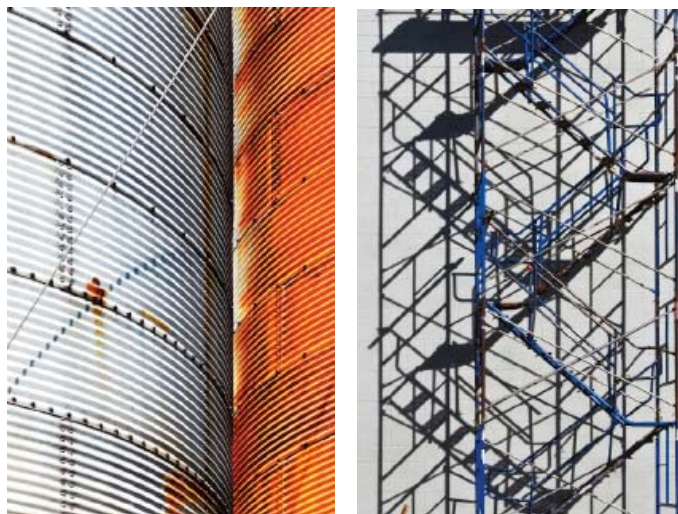
Untitled, Jason McCoy Gallery, New York, NY, 2009

Ilana Manolson: New Works, J. David Broudo Gallery of Art,
Endicott College, Beverly, MA, 2009



FERNANDO MARTINS

Winchendon, MA



(Left) *Contrast*, 2010

Photograph

11" x 17"

\$500

(Right) *Scaffolding*, 2012

Photograph

11" x 17"

\$500

EDUCATION

New England School of Art, Suffolk University, BFA

RECENT EXHIBITIONS

Off the Wall, Danforth Museum of Art, Framingham, MA, 2011

76th Regional Exhibition of Art and Craft, Fitchburg Art
Museum, Fitchburg, MA, 2011

*Artifacts: Image and Context Photographs by Fernando
Martins*, Franklin Square Society Salon Gallery, Hanover
Theatre, Worcester, MA, 2011

75th Regional Exhibition of Art and Craft, Fitchburg Art
Museum, Fitchburg, MA, 2010

STEPHEN MAURER

Medford, MA



Peonie, 2012
Cherry Burl
5 1/8" x 7 3/4"
\$2,500

RECENT EXHIBITIONS

It's in the Grain, Mill Brook Gallery, Concord, NH, 2012

Unscripted, Fountain Street Fine Art, Framingham, MA, 2011

Ashes to Art, Funeria, Graton, CA, 2008 and 2010

Newton Open Studios Juried Show, Newton, MA, 2010

VICKI MCKENNA

Newton, MA

Sunrise Triptych, 2011
Pigment on paper color photograph
20" x 24"
\$400

RECENT EXHIBITIONS

Monochrome and Minimalism, Newton Open Studios, Newton City Hall, Newton, MA, 2012

Benefit Exhibition and Auction, Arsenal Center for the Arts, Watertown, MA, 2011

Summer Workshop Exhibition, New England School of Photography, Boston, MA, 2011



NATHAN MINER

Arlington, MA

Emergence One, 2011

Mixed media

30" x 22"

\$1,500

EDUCATION

Rhode Island School of Design, BFA, 1999

RECENT EXHIBITIONS

Bombay Artisan Series, Mills Gallery, Boston, MA, 2011

Tenth Anniversary, Boston Drawing Project, Carroll and Sons, Boston, MA, 2009

i no i, Newbury College Art Gallery, Newton, MA, 2009

Off the Wall, Danforth Museum of Art, Framingham, MA, 2009



MATTHEW NEUMAN

Aspen, CO



Muskellunge, 2012

Poured acrylic paint and wood on panel

60" x 60"

\$7,500

EDUCATION

Boston University College of Fine Arts, MFA

Skidmore College, BA

RECENT EXHIBITIONS

Junk or Genius, Gallore Gallery, Middletown, CT, 2012

Supersymmetry, Horowitz Performing Arts Center, Saxtons River, VT, 2012

New Talent, Alpha Gallery, Boston, MA, 2011

Energy As Currency, LIVASPENART, Aspen, CO, 2011

CHARLES NORRIS

Cambridge, MA



(Top) *Zig Zag II*, 2011
Woodblock print on asian paper
9" x 24"
\$900

(Bottom) *Pier Noir III X*, 2011
Woodblock print on asian paper
12" x 16"
\$800



EDUCATION

Harvard University, Graduate School of Design, MA.UD., 1969
Harvard University, Graduate School of Design, MA.Arch., 1968
Princeton University, BA, 1965

RECENT EXHIBITIONS

Small Works Salon, Maud Morgan Art Center, Cambridge, MA, 2012

Off the Wall, Danforth Museum of Art, Framingham, MA, 2011

Off the Wall, Danforth Museum of Art, Framingham, MA, 2010

Falmouth Artists Guild, Falmouth, MA, 2010

TED OLLIER

Medford, MA

(Top) *Motion Composite: 15 April 2011 Commute*, 2011
Digital print
24" x 18"
\$1,000

(Bottom) *Skygrid: 13 July to 4 September*, 2011
Digital print
42" x 24"
\$1,400

EDUCATION

Massachusetts College of Art and Design, MFA, 2008
Texas State University, MFA, 2004
University of Texas at Austin, BA, 1993

RECENT EXHIBITIONS

Rethink Ink: Mixit Studios 25th Anniversary Exhibit,
Boston Public Library, Boston, MA, 2012

Contained, Mills Gallery at the Boston Center for the Arts,
Boston, MA, 2011

The Global Perspective, Worcester State University,
Worcester, MA, 2011



MICHELLE ARNOLD PAINE

Waltham, MA

(Top) *Fede (Faith) I*, 2011

Oil on canvas

12" x 12"

\$500

(Bottom) *Passage: Assisi I*, 2011

Oil on canvas

12" x 12"

\$500

EDUCATION

University of New Hampshire, MFA, Painting, 2007

School of the Museum of Fine Arts, Boston, Certificate, 2002

Gordon College, BA, 1999

RECENT EXHIBITIONS

Contemplation, Center for Christian Studies,
Gordon College, MA, 2012

Contemplation, Center for Christian Studies,
Gordon College, MA, 2011

New Work 2010, Wadleigh Gallery, Chester College,
Chester, NH, 2010



SARAH POLLMAN

Allston, MA



Untitled (DeBeen Coffee), 2011

Archival inkjet print

16" x 20"

\$400

EDUCATION

School of the Museum of Fine Arts, Boston, MFA, 2013

School of the Museum of Fine Arts, Boston, BFA, 2007

RECENT EXHIBITIONS

New England Photography Biennial, Danforth Museum of Art,
Framingham, MA, 2011

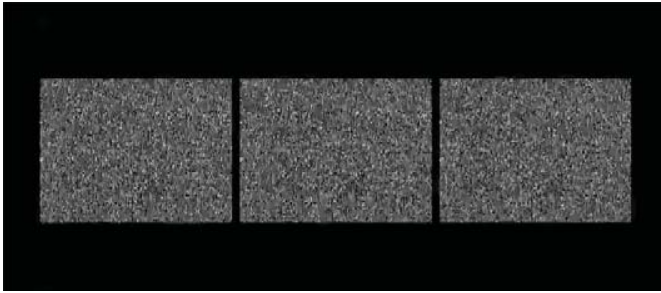
A Community of Artists, Danforth Museum of Art,
Framingham, MA, 2011

A Taste of Boston, 808 Gallery at Boston University,
Boston, MA, 2011

15th Annual Member's Exhibition, Photographic Center
Northwest, Seattle, WA, 2010

LINDA PRICE-SNEDDON

Salem, MA



Third Eye, 2011

Video

Not For Sale

EDUCATION

School of the Museum of Fine Arts, Boston, Diploma, 1998
Lyme Academy of Fine Arts, Studio Program, 1996

RECENT EXHIBITIONS

S.O.S. Project (Soon...Our Salvation), HallSpace,
Boston, MA, 2010

My Nature/Our Nature, Fuller Craft Museum,
Brockton, MA, 2008

WonderWorlds, Kidspace @ Mass MoCA, North Adams, MA, 2005

Morphogenetic Field, Boston Center for the Arts,
Boston, MA, 2001

ESTHER PULLMAN

Cambridge, MA

(Top) *Stowell Park Greenhouse, North Leach, England*, 2010
Archival inkjet photograph
30" x 60" for triptych
\$3,600

(Bottom) *Wellesley College Greenhouse, Sunflowers*, 2008
Archival inkjet photograph
22" x 66.5"
\$4,800



EDUCATION

Yale University, BFA, MFA, 1966
Smith College, BA, 1964

RECENT EXHIBITIONS

Esther Pullman: Greenhouses, Jane Deering Gallery,
Santa Barbara, CA, 2011

Green | House | Divided: Esther Pullman, Pegge Hooper
Gallery, Honolulu, HI, 2011

Greenhouses Panoramas by Esther Pullman,
Smith College Alumnae House, Northampton, MA, 2009



1st Prize Winner of Off the Wall

GERRI RACHINS

Jamaica Plain, MA

Remix, 2009

Marker and color pencil on paper

50" x 38"

\$3,800

EDUCATION

Massachusetts College of Art and Design, MFA, 2001

Philadelphia College of Art, BFA, 1977

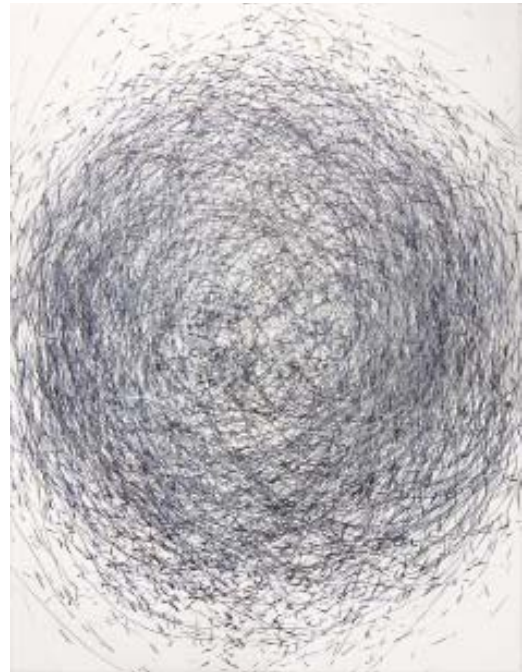
RECENT EXHIBITIONS

Gray Matters/Primary Matter-Gerri Rachins, Mobilia Gallery, Cambridge, MA, 2009

Massachusetts College of Art Foundation Faculty Exhibition, Brant Gallery, Boston, MA, 2007

The "S" Series, Mobilia Gallery, Cambridge, MA, 2004

Rags-Painting-Rags, New England School of Art & Design, 2004



ASTRID REISCHWITZ

Bedford, MA



Zigzag on Gray Lines, 2010

Photograph

16" x 20"

\$275

EDUCATION

New York University, Certificate, Arts Administration, 2001

Technical University Braunschweig, Germany, PhD, 1996

RECENT EXHIBITIONS

Street Art, Griffin Museum of Photography, Winchester, MA, 2012

Street Art, Boston Public Library, 2011

Red, Cambridge Art Association, Cambridge, MA, 2011

Expectations, Emerson Umbrella Center for the Arts, Concord, MA, 2009

COLEMAN ROGERS

Newton Highlands, MA



Tucson Needs a Wash, 2011
B & W film photo, optical enlargement
16" x 31"
\$750

RECENT EXHIBITIONS

Reviving Impressions, Copley Society of Art, Boston, MA, 2012

The Allure of Light, Copley Society of Art, Boston, MA, 2011

Juried Fall Preview Show, Newton Open Studios,
Newton, MA, 2011

Members Juried II Exhibit, Concord Art Association,
Concord, MA, 2012

LISA GABRIELLE RUSSELL

Braintree, MA

Emergence #402, 2011
Oil on canvas
10" x 9.5"
\$3,800

EDUCATION

School of the Museum of Fine Arts, Boston, MFA, 1993
Massachusetts College of Art and Design, BFA, 1983

RECENT EXHIBITIONS

Distillation: Lisa Russell/Mary Bucci McCoy, Bannister Gallery,
Rhode Island College, Providence, 2012

Abstraction Now: New Trends in Abstraction, Eclipse Mill
Gallery, North Adams, MA, 2010

Small Works, Virginia Museum of Fine Art, 2008

Between 1 and 1, Galerie Vclava Spaly Gallery, Prague,
Czech Republic, 2005



NATHAN SCHNEIDER

Natick, MA

Biewend Cluster, Tufts Medical Center, 2012

Photograph

15" x 18"

\$260

RECENT EXHIBITIONS

Morse Institute Library, Natick, MA, 2012

Main Library, Wellesley, MA, 2011

Young Arts Center, Drew University, Madison, NJ, 2009



LORI SCHOUELA

Cambridge, MA



Honorable Mention

Road Never Taken, 2012

Acrylic on canvas

60" x 48"

Not For Sale

EDUCATION

School of the Museum of Fine Arts, Boston, Certificate, 2008

School of the Museum of Fine Arts, Boston, Diploma, 2006

Syracuse University, BFA, 1980

RECENT EXHIBITIONS

Community of Artists, Danforth Museum of Art, Framingham, MA, 2011

Off the Wall, Danforth Museum of Art, Framingham, MA, 2010

Tracing Absence, Bromfield Gallery, Boston, MA, 2010

Glamour Power, Bridge Gallery, New York, NY, 2010

AMY SCHUPLER VEANER

Needham, MA



Just Passing Through, 2011
Polymer plate litho transfer
22" x 30"
\$1,200

EDUCATION

Rhode Island School of Design, BFA, 1977

RECENT EXHIBITIONS

monoTYPE: The Literate Print, Carolyn Jenkins Gallery, Kimball Jenkins Estate, Concord, NH, 2012

RED It's more than a color..., Kathryn Schultz Gallery, Cambridge, MA, 2011

The Art of the Unique Print, Paul Mellon Arts Center, Choate Rosemary Hall, Wallingford, CT, 2011

Community of Artists, Danforth Museum of Art, Framingham, MA, 2011

REBECCA SKINNER

Franklin, MA

Resting, 2011
Photograph
24" x 32"
\$500

EDUCATION

Rhode Island School of Design, Digital Photography Certificate, 2010

RECENT EXHIBITIONS

Scratching the Surface, Kathryn Schultz Gallery, Cambridge, MA, 2012

2011 Members' Exhibition, Attleboro Arts Museum, Attleboro, MA, 2011

A Second Look, Zullo Gallery, Medfield, MA, 2011

2011 New England Exhibition, Cape Cod Art Association, Barnstable, MA, 2011



RHONDA SMITH

Cambridge, MA

Lands Moving, 2012
Oil and pencil on panel
36" x 36"
\$3,000

EDUCATION

Cooperativa Mosaicisti, Apprentice, 1990
School of the Museum of Fine Arts, Boston, 1975
St. Lawrence University, BA, 1973

RECENT EXHIBITIONS

Particles and Waves, Iliad Gallery, New York, NY, 2012

Off the Wall, Danforth Museum of Art, Framingham, MA, 2011

Massachusetts Artists, Brush Gallery, Lowell, MA, 2011

Alchemy Art & Science, Schiltkamp Gallery, Clark University,
Worcester, MA, 2010



KERI STRAKA

Framingham, MA



Bacteria Rings, 2010
Porcelain, clear resin, metal pins
3" x 3" for each dish
\$4,000

EDUCATION

Massachusetts College of Art and Design, MFA, 2003
Western Washington University, BFA, 1999

RECENT EXHIBITIONS

Un-wedged, Pottery Northwest, Seattle, WA, 2012

Colony, Bromfield Gallery, Boston, MA, 2012

Dual, William Traver Gallery, Seattle, WA, 2011

Red Heat, University of Tulsa, Tulsa, OK, 2011

MARIAN STRANGFELD

Wayland, MA



Big Sur Coast, 2012
Oil on canvas
24" x 30"
\$2,200

EDUCATION

Rutgers University, BA, 1970

RECENT EXHIBITIONS

Fall Juried Art Exhibit, Newton Open Studios, 2011

DAVID STURTEVANT

West Roxbury, MA

Construction/Bridge 8 (East Somerville), 2012
Oil on board
24" x 21"
Not For Sale

EDUCATION

Swarthmore College, BA, 1996

RECENT EXHIBITIONS

New Work, Susanne Schultz Gallery/Canvas Fine Art, Boston, MA, 2012

Urban Scenes, Buildings and Places, Zullo Gallery, Medfield, MA, 2011

Community of Artists, Danforth Museum of Art, Framingham, MA, 2011

New Work, 451 Marketing, Boston, MA, 2011



Honorable Mention

DONNA HAMIL TALMAN

Worcester, MA

(Right) *Exulting in the Flow*, 2011

Paper, red clay, and encaustic

44" x 14"

\$2,500

(Left) *Including the Consequences of Our Actions*, 2011

Paper, red clay, and encaustic

44" x 14"

\$2,500

EDUCATION

Clark University, MA, 1970

RECENT EXHIBITIONS

6th Annual Encaustic Invitational, Conrad Wilde Gallery,
Tucson, AZ, 2011

Origins, Copley Society of Art, Boston, MA, 2008

Ancestor Portraits, Soho Photo, New York, NY, 2003

Future/Past, Schneider Gallery, Chicago, IL, 2002



Honorable Mention

JOHN S. TILNEY, JR.

Concord, MA

Heads and Caboose, 2011

Silver print

22" x 28"

\$1,200

EDUCATION

Columbia University, BA, 1972

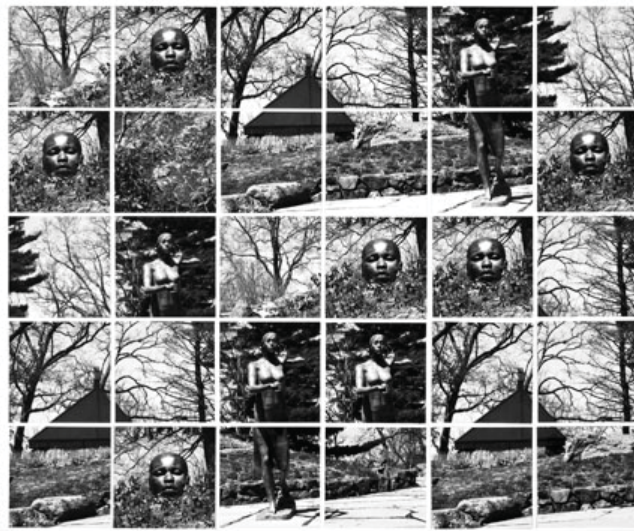
RECENT EXHIBITIONS

Liminal: The Space Between, Emerson Umbrella Center for the
Arts, Concord, MA, 2012

John S. Tilney, Jr. Recent Work, Krause Gallery at the Moses
Brown School, Providence, RI, 2009

Gaudi's World, Garner Center for Photographic Exhibitions,
New England School of Photography, Boston, MA, 2008

Photographs by John S. Tilney, Jr., Gallery Black and White,
Boston, MA, 2006



CATHARYN TIVY

Brookline, MA

Canoeing on The Charles, Waltham, MA, 1907, 2011
Archival inkjet print
10.25" x 5.5"
\$500

EDUCATION

School of the Museum of Fine Arts, Boston, Continuing Education, 2008

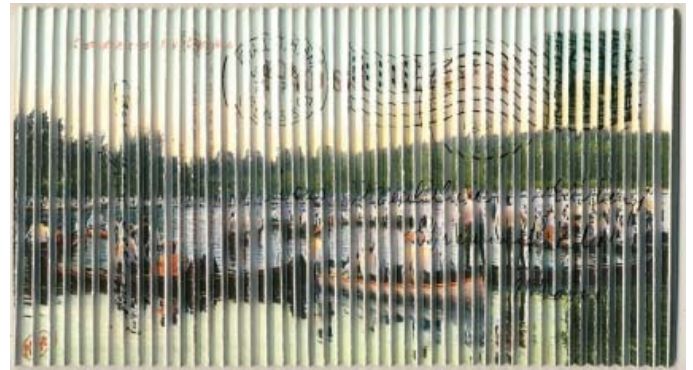
RECENT EXHIBITIONS

The Art of Illusion, Monmouth Museum, Lincroft, NJ, 2012

Undesigned, BAM Gallery, Brookline, MA, 2012

Postcards from the Edge, Cheim & Reid Gallery, NY, 2012

Kite, The Barn Gallery, Lenox, MA, 2011



WILLARD TRAUB

Wayland, MA



Andrew's Backyard, 2007
Silver gelatin print
21" x 17"
\$525

EDUCATION

St. Lawrence University, BA, 1966
Case Western Reserve University, MA, 1968

RECENT EXHIBITIONS

Recovery, Photographic Resource Center, Boston, MA, 2012

Recovery, Danforth Museum of Art, Framingham, MA, 2011

Industrial Strength, Fountain Street Fine Art, Framingham, MA, 2011

Off the Wall, Danforth Museum of Art, Framingham, MA, 2011

JENNIFER UHRHANE

Jamaica Plain, MA



Tikal #1, El Petén, Guatemala, 2010/2012
Traditional c-print from color negative
20" x 16"
\$650

EDUCATION

Boston University, MA, 2006
Tufts University, Certificate, 2001
Rhode Island School of Design, BFA, 1994

RECENT EXHIBITIONS

Jennifer Uhrhane and Brian Cushman-Daly, Hallway Gallery, Jamaica Plain, MA, 2010

Jennifer Uhrhane, Photographs, TaraPeck Gallery, Portsmouth, NH, 2007

Surface and Place: Photographs by Jennifer Uhrhane, Gallery ISO, Boston, MA, 2003

Surface and Place: Photographs by Jennifer Uhrhane, Newport Art Museum, Newport, RI, 2002

JEANNE WILLIAMSON

Natick, MA

Fence As Lace #1, 2011
Mixed media on stiffened fabric
66" x 48"
\$7,500

EDUCATION

Massachusetts College of Art, MSAEd, 1980
Philadelphia College of Art, BFA, 1978

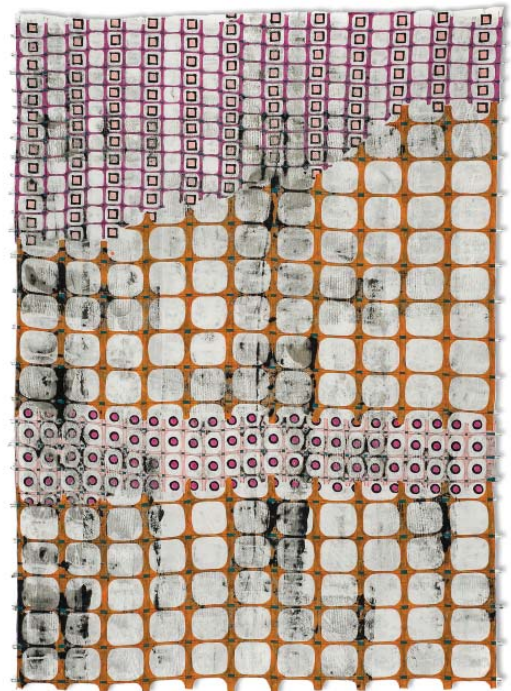
RECENT EXHIBITIONS

The 8th International Fiber Biennial, Snyderman-Works Galleries, Philadelphia, PA, 2012

Public Art Installation, Constellation Center, Cambridge, MA, 2011-2012

A Novel Idea, Hampden Gallery Incubator Project Space, University of Massachusetts Amherst, MA, 2012

The Constructed Surface, Krause Gallery, Moses Brown School, Providence, RI, 2011



TIMOTHY WILSON

Somerville, MA

Hallowell Bridge, 2011

Photograph

23" x 30"

\$500

RECENT EXHIBITIONS

Conversations, Maynard Center for the Arts, Maynard, MA, 2012

Exquisite Resistance, Cambridge Art Association,
Cambridge, MA, 2012

Then & Now: The Enduring Allure of Light in Photography,
Copley Society, Boston, MA, 2011

Community of Artists, Danforth Museum of Art,
Framingham, MA, 2011



YU-WEN WU

Wayland, MA



Lines of Flight, 2012

Digital print mounted on aluminum

30.5" x 66"

\$4,800

EDUCATION

School of Museum of Fine Arts, Boston, Diploma, 1987
Brown University, ScB, 1980

RECENT EXHIBITIONS

Poetry of Translations, Haslla Museum of Art, Gangneung,
South Korea, 2011

Listen, Pentimenti Gallery, Philadelphia, PA, 2011

Suspended, A Song Cycle, Danforth Museum of Art,
Framingham, MA, 2009

Self-Similar, Ellen Miller Gallery, Boston, MA, 2009

Catalog Designed & Edited By:

Michael Lupacchino, Membership and Marketing Associate, Danforth Museum and School of Art
Jessica Roscio, Associate Curator & Museum Registrar, Danforth Museum and School of Art

Contributing Editors:

Eileen Cham, Curatorial Intern, Danforth Museum and School of Art
Abigail Runyan Romanul, Curatorial Intern, Danforth Museum and School of Art
Sofia Vestweber, Curatorial Intern, Danforth Museum and School of Art